

Technical

Bulletin M209001

MEGAsys

Remote Alarm Shunting/Delay Exit Route Control

For Access Control

Technical Notes

TN-20900101

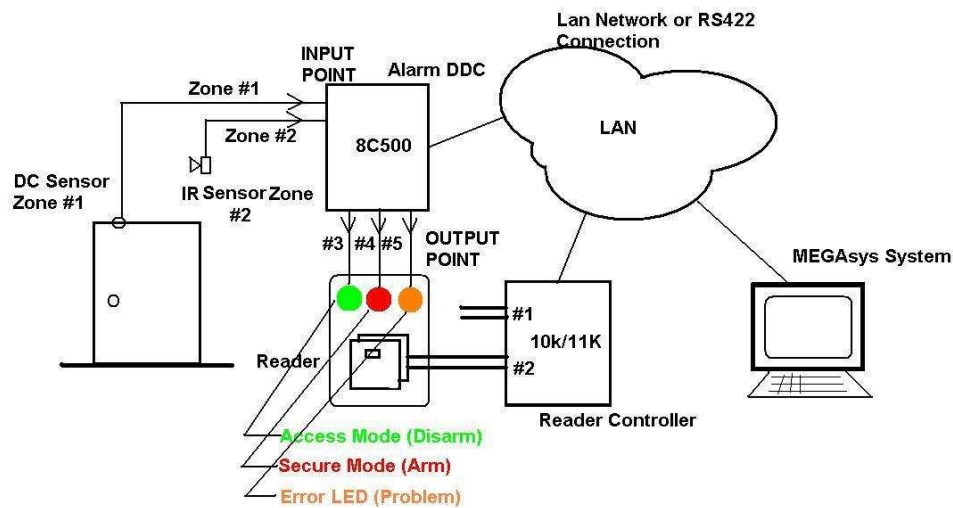
V2.0

For MEGAsys V14.8 or above (English Version)

2009/08/27

Evertech Electronics Ltd.

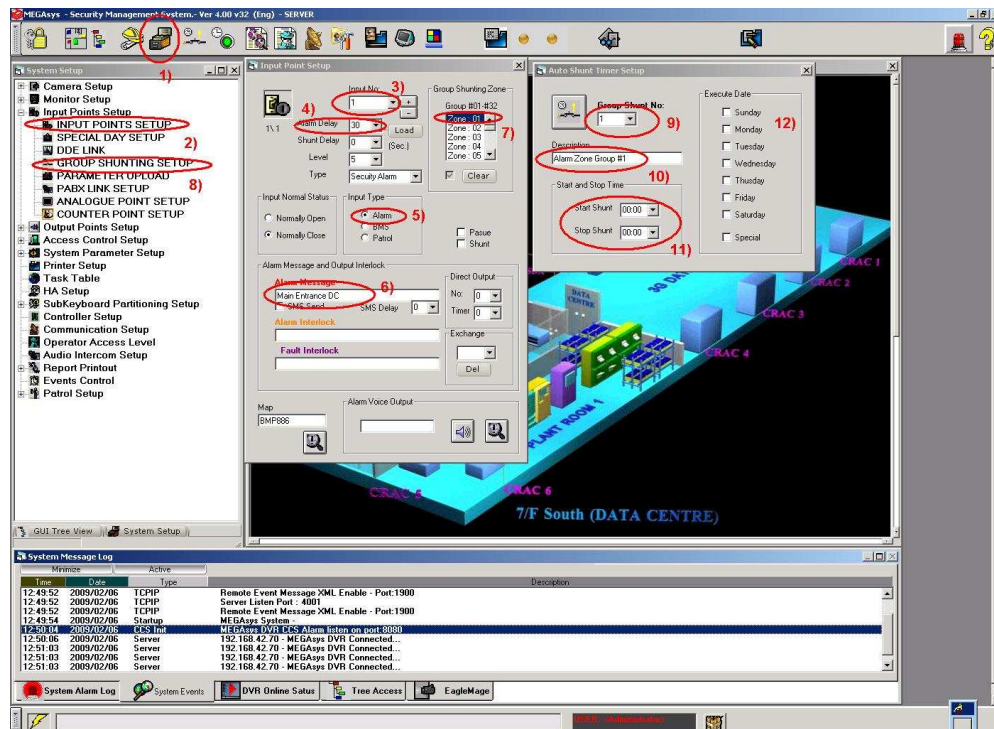
Card Access Control - Alarm Delay and Shunting Delay for Exit Route:



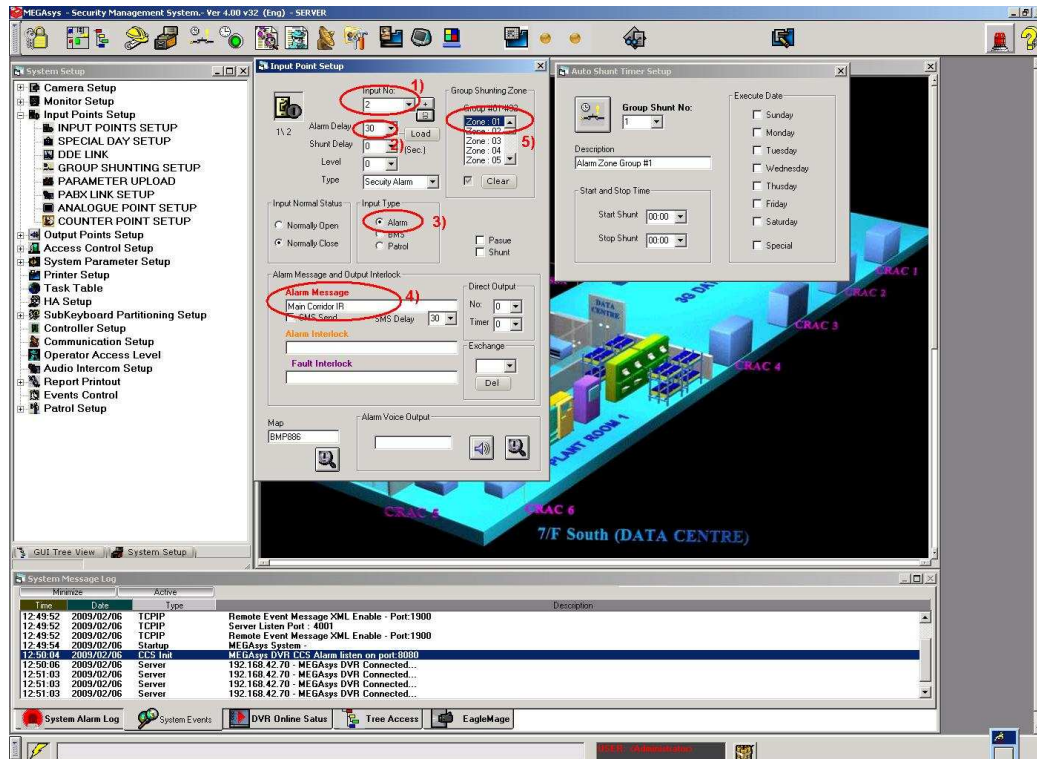
Alarm Zone Setting – Door Contact (DC) and IR Server

1) DC for Zone #1

Setup all parameters from (1) to (8) for input zone define, Setup GS#1 for this alarm point (7)
Setup (9) to (12) steps for Group Shunt #1, never put timer (11) and no date setup (12).
Set 30 seconds alarm delay for this zone (4)

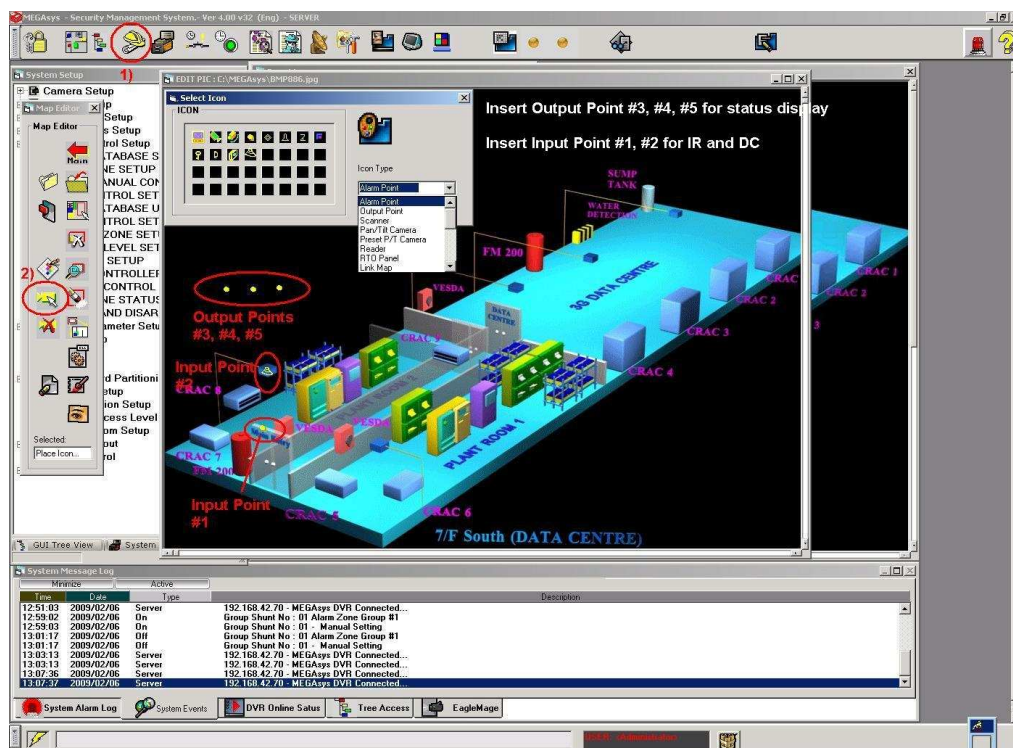


2) IR for Zone #2 setup Setup parameter form (1) to (5)



Insert Alarm Input Icon and Output Status Icon

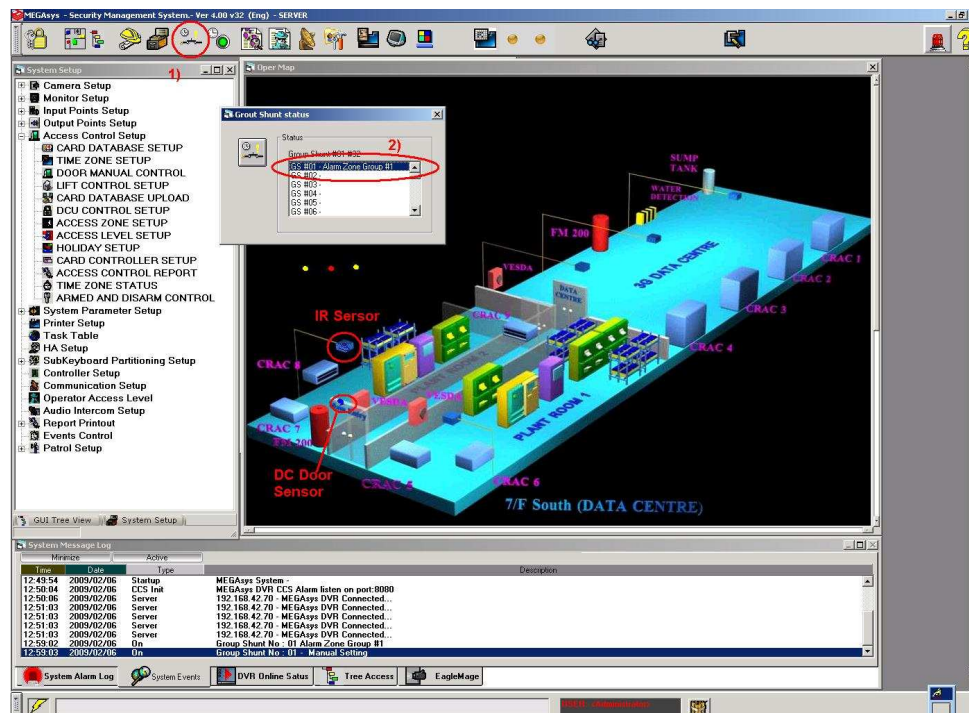
1) Insert zone #1, zone #2 for input, and Zone #3-#5 for output.



Group Shunt - Testing

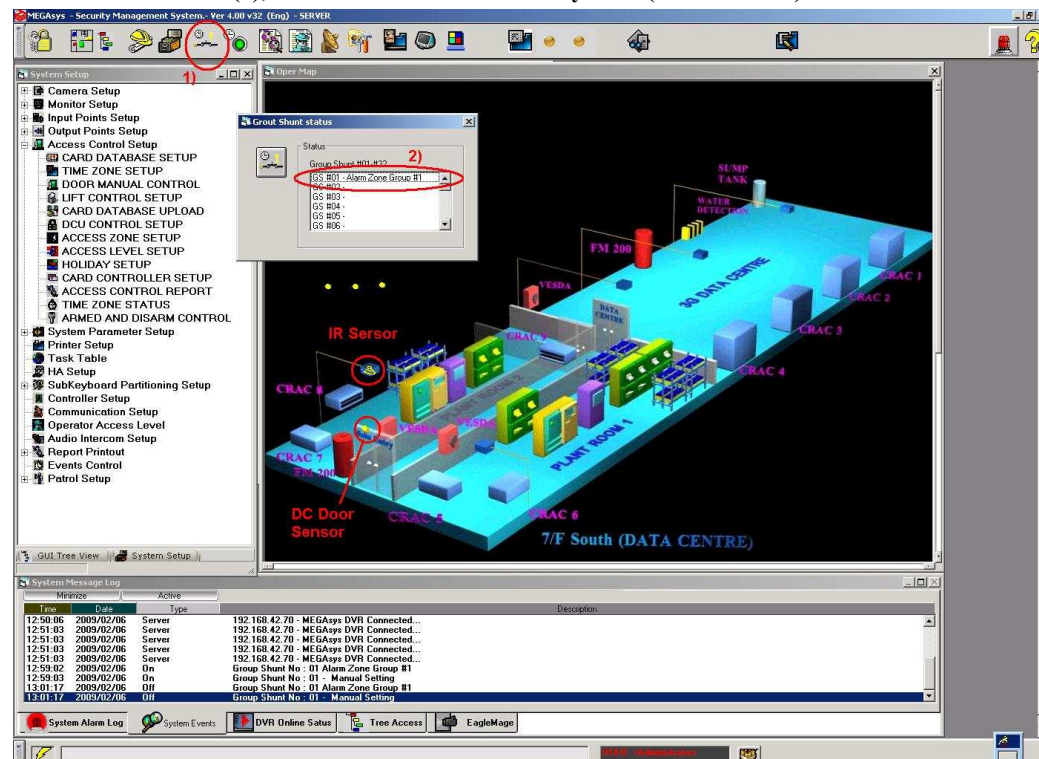
1) Shunt the GS #1

Direct click on this list (2), check the icon color on MAP, color will turn to blue (Shunt Mode)



3) Shunt Off

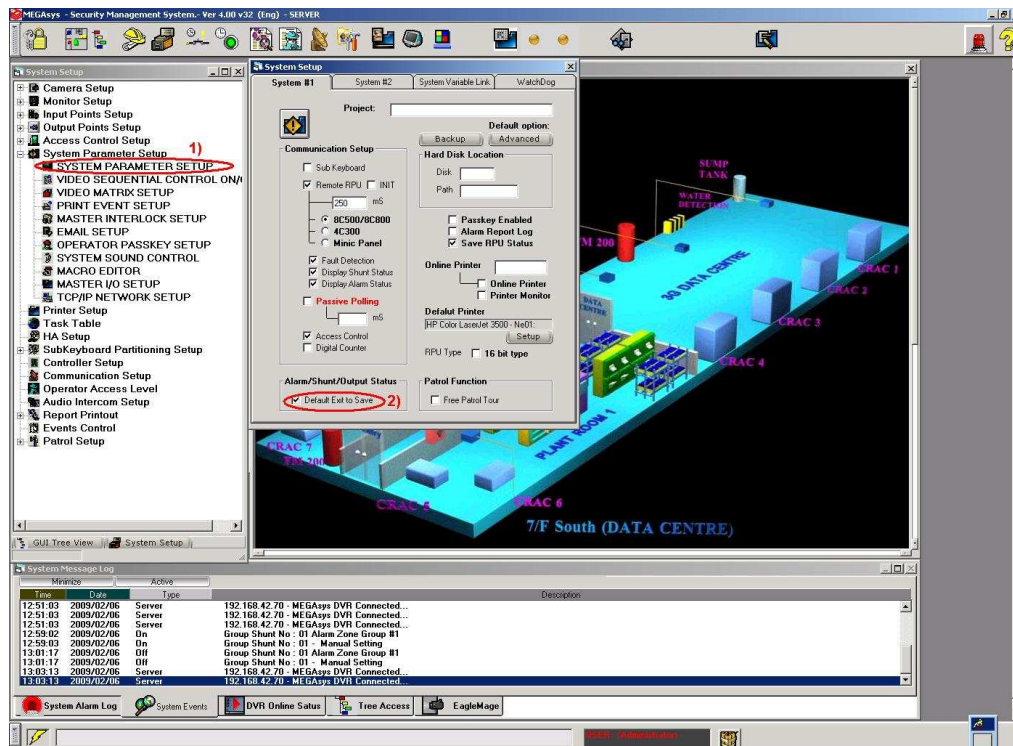
Click on the list (2), and Color will turn back to yellow (Secure Mode)



MEGAsys GUI System – Alarm Remote Shunting and Delay Control

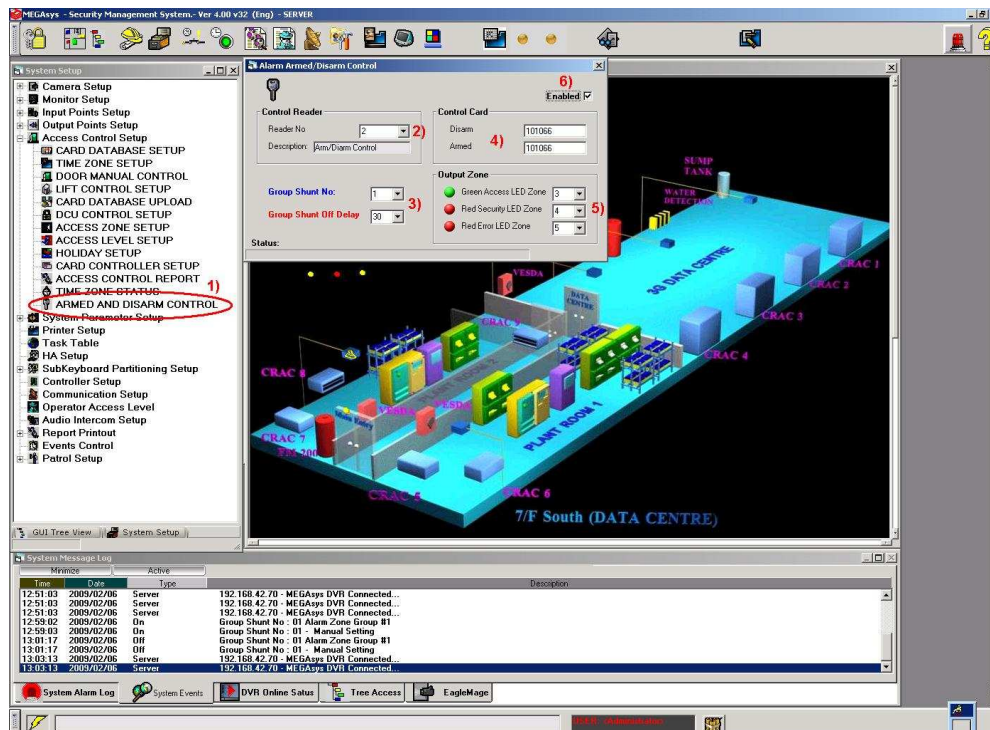
System Setup

Tell the system save all data before system shutdown.



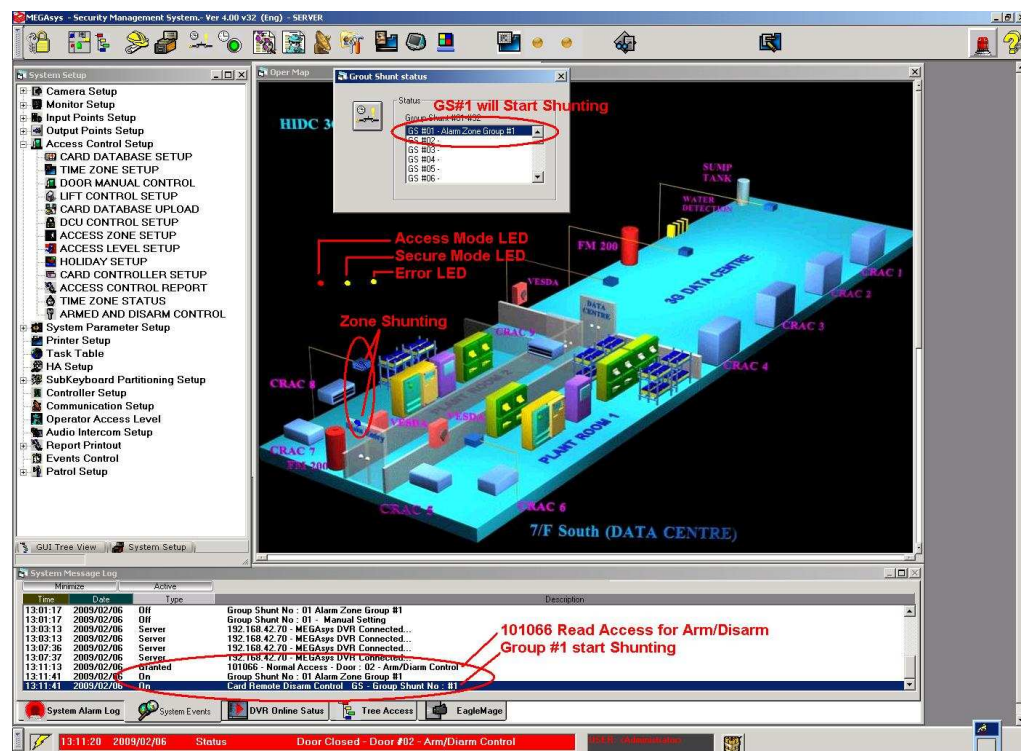
Control Reader Setup

- 1) Set the reader number #2 (door 2) (2)
- 2) Set the control Group Shunt to GS#1 (3) and the delay exit route time for 30 sec.
- 3) Set the card no for arm and disarm access, can be difference cards (4)
- 4) Set the output (8c500) DDC points for status display (5)

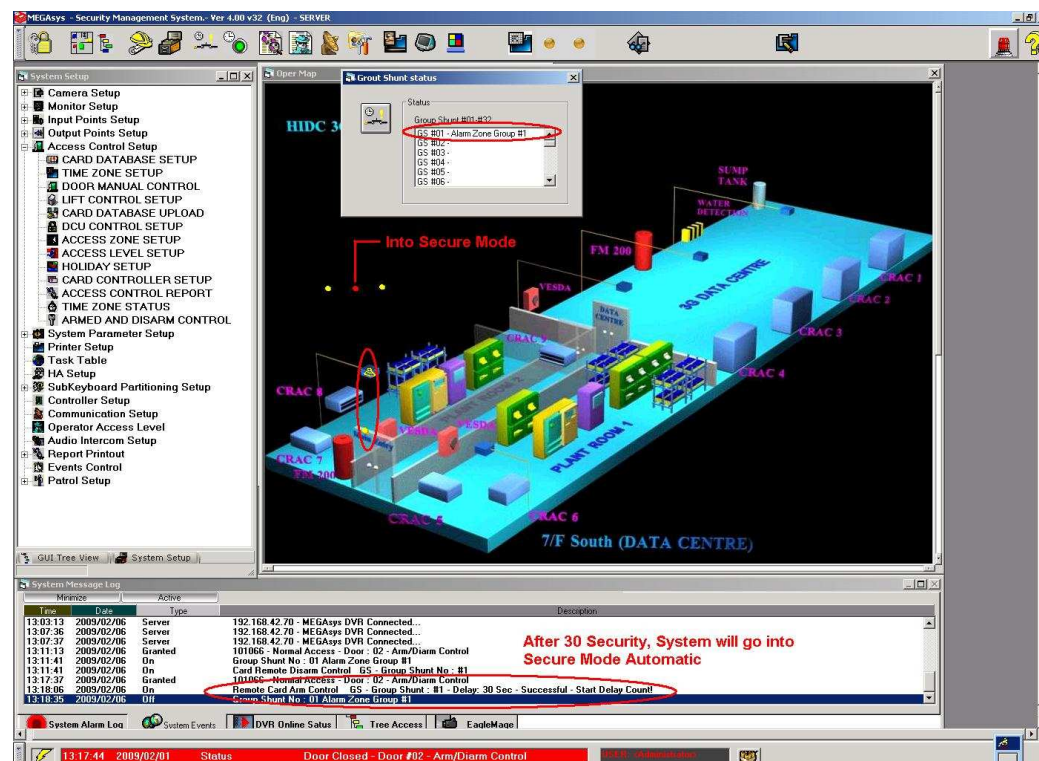


MEGAsys GUI System – Alarm Remote Shunting and Delay Control

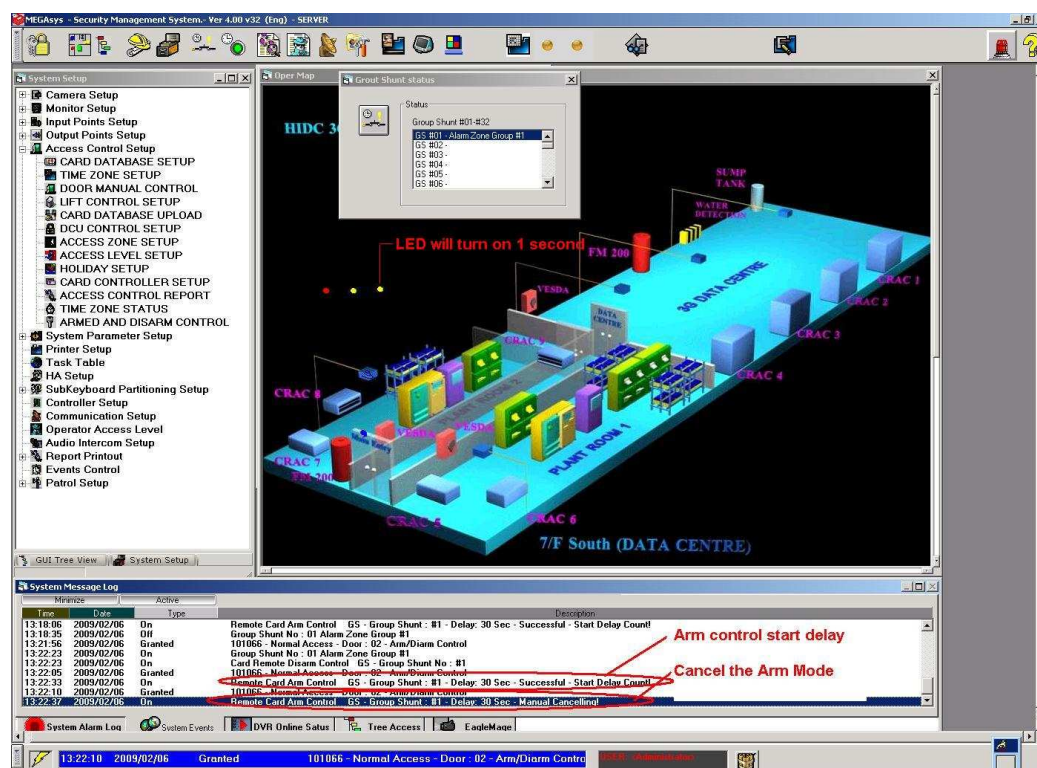
Disarm test – Read the card for reader #2 – all zones turn into access mode (blue color), and the output LED #3 on, LED #4 off.



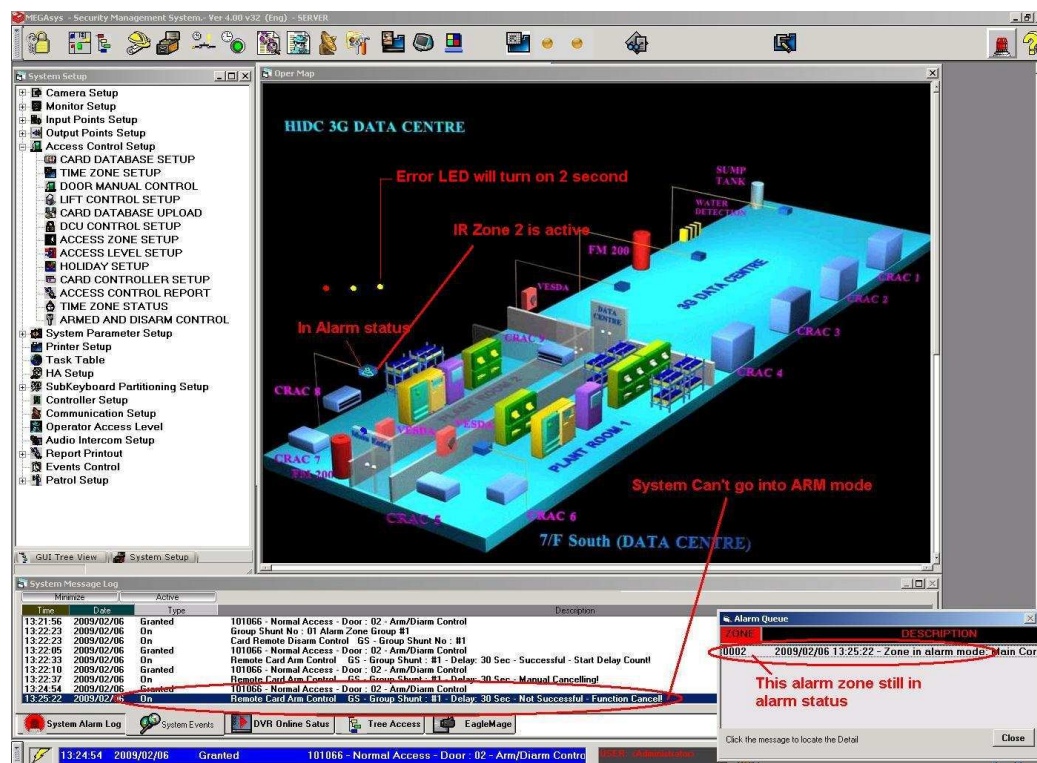
Arm test – Read the card for reader #2, exit delay process will start
After 30 seconds all alarm points will turn in secure mode (yellow color), and output LED #3 off, LED #4 on.



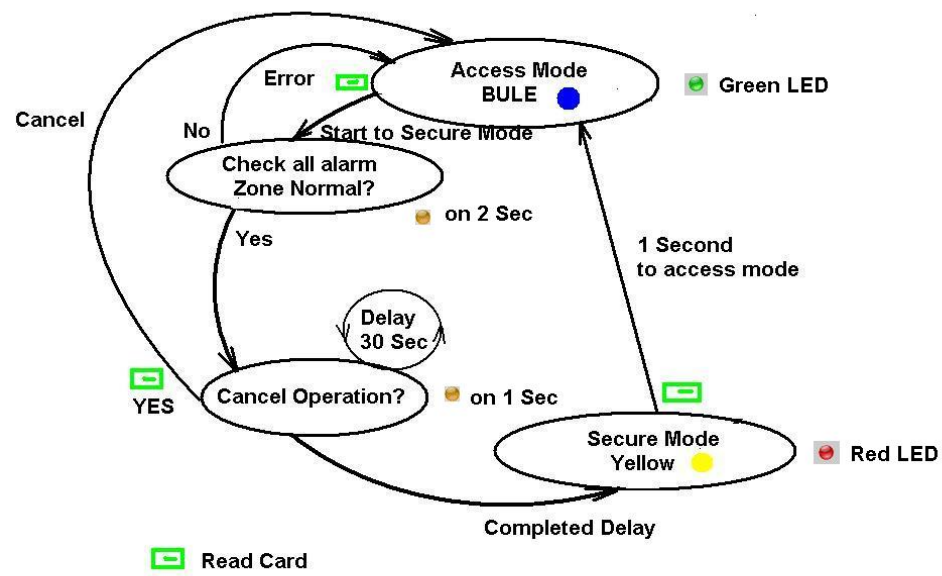
Cancel Exit Mode – If you need to cancel the exit delay operation mode during the delay counting, read the card again, exit operation will stop and the ERROR LED will turn on 1 second.



Arm with ERROR – if any alarm points can't resume moral status within GS#1, system will stop exit delay counting function, error LED with turn on 2 second. If all zones back to normal, you can read the card for arm mode again.



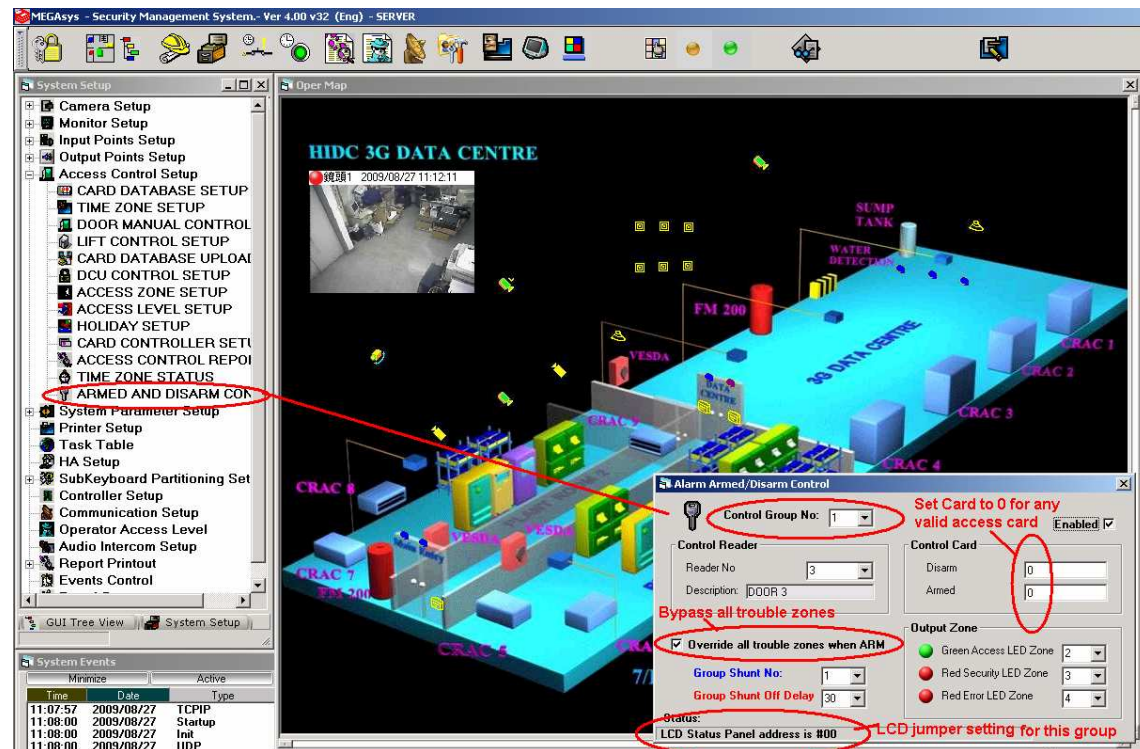
Reference Flowchart



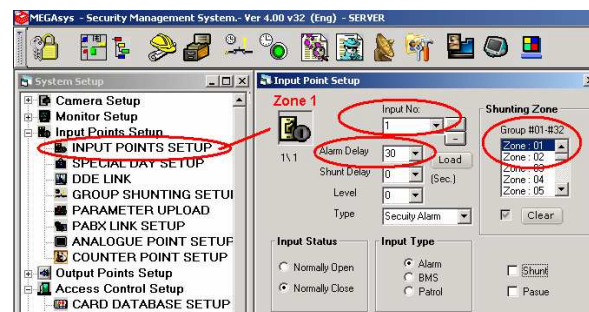
MEGAsys GUI System – Alarm Remote Shunting and Delay Control

For Multi Group - Arm/Disarm control, maximum 7 groups can be defining for a server.

Each group can set different Group Shunt No group.



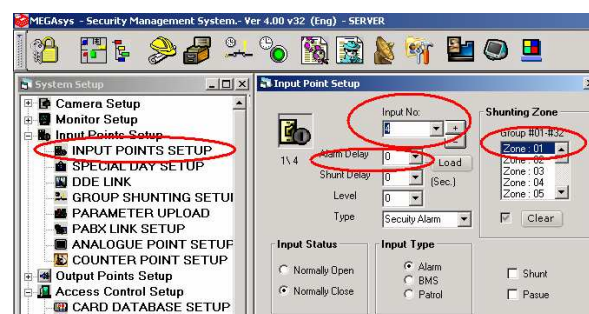
Ex) Reader 3 for control the group 1 ARM/DISARM



Exit Zone:

Zone 0001, define Group #1

Set Alarm Delay for 30 seconds



Normal Alarm Zone:

Zone 0004, define Group #1

No need alarm delay for the zone, because this zone is not a EXIT zone.

Group #1 – controlling the zone 0001, zone 0004

Control Card set to 0 in group #1, means: Arm/Disarm function can access by all valid access user.

Message send control group #1 for LCD address #0, group #2 for LCD address #2

Set address to #01

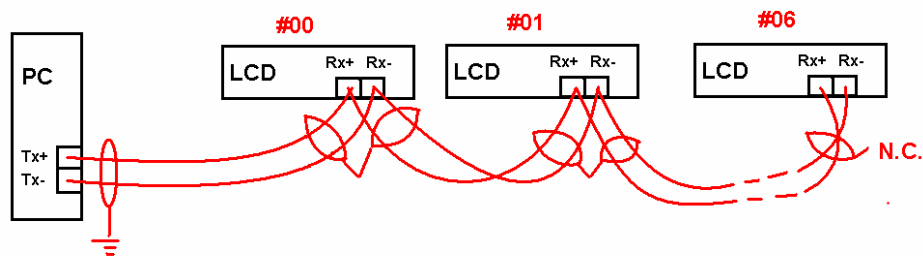


Set address to #00

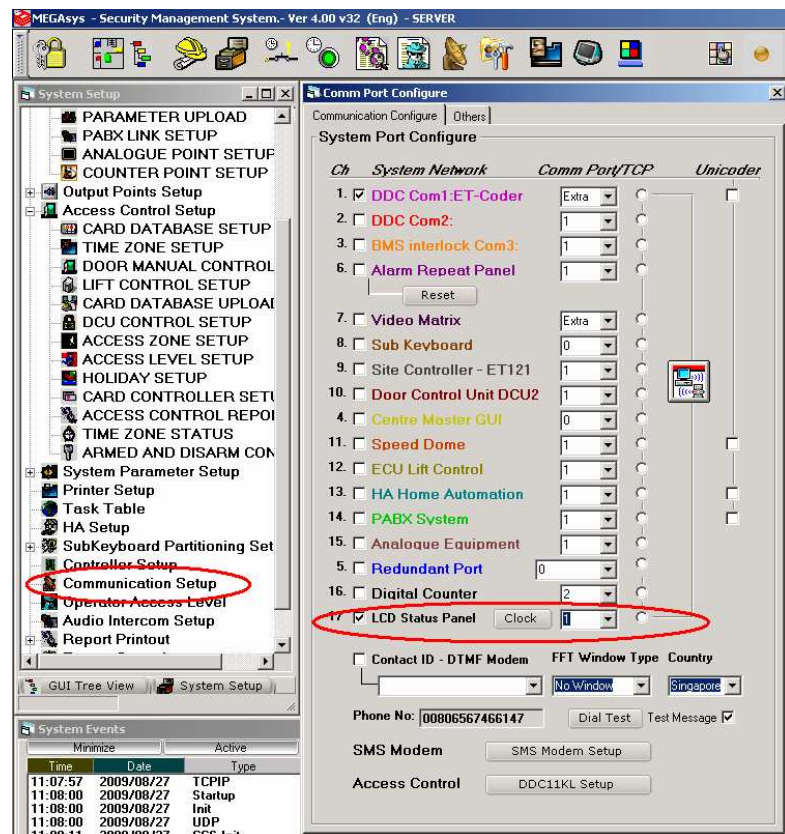


LCD Configure as follows:

RS-422 daisy chain connection for R+, R- from the PC T+, T- terminals

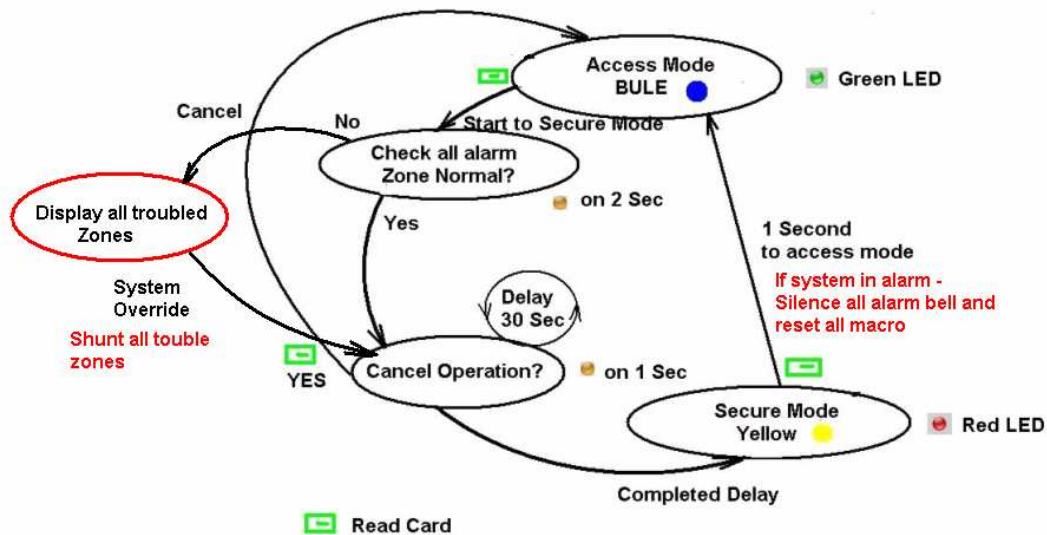


Set PC comm. Port:



Reference Flowchart

- Override all trouble zone selected:



Bypass all trouble zones when system set with ARM mode.

